

# Housing Supply Overview

A RESEARCH TOOL PROVIDED BY SOUTH CAROLINA REALTORS®



## October 2023

U.S. sales of new residential homes continue to soar, rising 12.3% from the previous month to an annual rate of 759,000, according to the Census Bureau, with sales up 33.9% compared to the same period last year. The latest reading surpassed economists' expectations for the month and marks the highest level of new-home sales since February 2022, as homebuilders continue to benefit from limited existing-home inventory, which remains at historically low levels nationwide. For the 12-month period spanning November 2022 through October 2023, Pending Sales in the Beaufort-Jasper County REALTORS® region dropped 5.0 percent overall. The price range with the largest pending sales gain was the \$750,001 to \$1,000,000 range, where sales improved 18.2 percent.

The overall Median Sales Price went up 8.5 percent to \$390,940. The property type with the largest gain was the Condos segment, where prices increased 17.6 percent to \$320,000. The price range that tended to sell the quickest was the \$150,000 and Below range at 58 days. The price range that tended to sell the slowest was the \$750,001 to \$1,000,000 range at 120 days.

Market-wide, inventory levels went up 28.3 percent. The property type with the largest gain was the Condos segment, where the number of properties for sale rose 77.9 percent. That amounts to 2.4 months of inventory for Single-Family Homes and 4.5 months of inventory for Condos.

## Quick Facts

**+ 18.2%**

Price Range with  
Strongest Sales:  
**\$750,001 to \$1,000,000**

**+ 0.8%**

Bedroom Count with  
Strongest Sales:  
**2 Bedrooms or Less**

**- 4.4%**

Property Type With  
Strongest Sales:  
**Single-Family Homes**

|                                |          |
|--------------------------------|----------|
| Pending Sales                  | <b>2</b> |
| Closed Sales                   | <b>3</b> |
| Days On Market Until Sale      | <b>4</b> |
| Median Sales Price             | <b>5</b> |
| Percent of List Price Received | <b>6</b> |
| Inventory of Homes for Sale    | <b>7</b> |
| Months Supply of Inventory     | <b>8</b> |

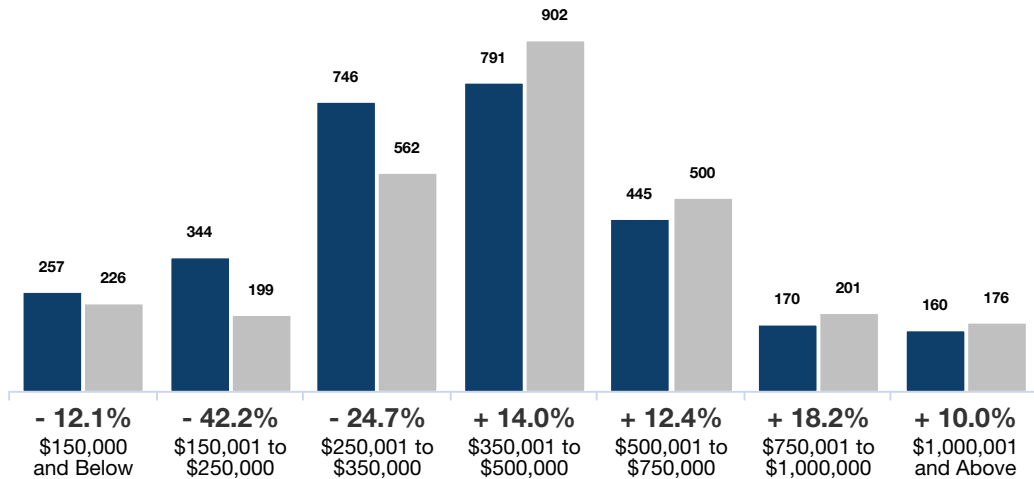


# Pending Sales

A count of properties on which offers have been accepted. **Based on a rolling 12-month total.**

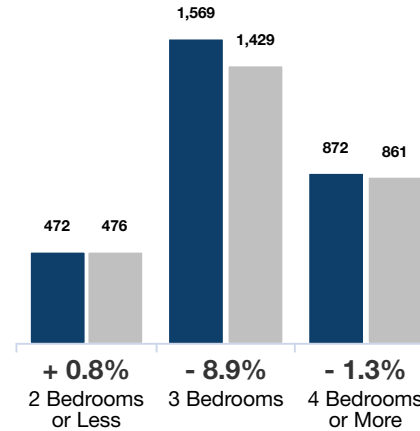
## By Price Range

■ 10-2022 ■ 10-2023



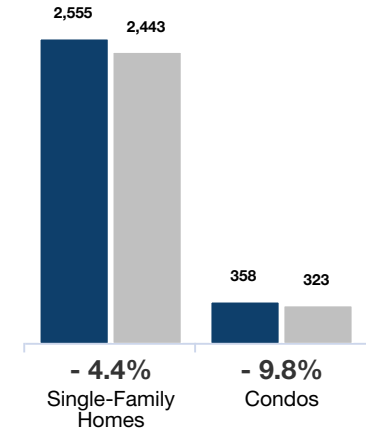
## By Bedroom Count

■ 10-2022 ■ 10-2023



## By Property Type

■ 10-2022 ■ 10-2023



### All Properties

| By Price Range           | 10-2022      | 10-2023      | Change        |
|--------------------------|--------------|--------------|---------------|
| \$150,000 and Below      | 257          | 226          | - 12.1%       |
| \$150,001 to \$250,000   | 344          | 199          | - 42.2%       |
| \$250,001 to \$350,000   | 746          | 562          | - 24.7%       |
| \$350,001 to \$500,000   | 791          | 902          | + 14.0%       |
| \$500,001 to \$750,000   | 445          | 500          | + 12.4%       |
| \$750,001 to \$1,000,000 | 170          | 201          | + 18.2%       |
| \$1,000,001 and Above    | 160          | 176          | + 10.0%       |
| <b>All Price Ranges</b>  | <b>2,913</b> | <b>2,766</b> | <b>- 5.0%</b> |

### Single-Family Homes

| By Price Range           | 10-2022      | 10-2023      | Change        |
|--------------------------|--------------|--------------|---------------|
| \$150,000 and Below      | 218          | 197          | - 9.6%        |
| \$150,001 to \$250,000   | 230          | 133          | - 42.2%       |
| \$250,001 to \$350,000   | 641          | 460          | - 28.2%       |
| \$350,001 to \$500,000   | 734          | 834          | + 13.6%       |
| \$500,001 to \$750,000   | 415          | 460          | + 10.8%       |
| \$750,001 to \$1,000,000 | 163          | 190          | + 16.6%       |
| \$1,000,001 and Above    | 154          | 169          | + 9.7%        |
| <b>All Price Ranges</b>  | <b>2,555</b> | <b>2,443</b> | <b>- 4.4%</b> |

### Condos

| By Price Range           | 10-2022    | 10-2023    | Change        |
|--------------------------|------------|------------|---------------|
| \$150,000 and Below      | 39         | 29         | - 25.6%       |
| \$150,001 to \$250,000   | 114        | 66         | - 42.1%       |
| \$250,001 to \$350,000   | 105        | 102        | - 2.9%        |
| \$350,001 to \$500,000   | 57         | 68         | + 19.3%       |
| \$500,001 to \$750,000   | 30         | 40         | + 33.3%       |
| \$750,001 to \$1,000,000 | 7          | 11         | + 57.1%       |
| \$1,000,001 and Above    | 6          | 7          | + 16.7%       |
| <b>All Price Ranges</b>  | <b>358</b> | <b>323</b> | <b>- 9.8%</b> |

| By Bedroom Count          | 10-2022      | 10-2023      | Change        |
|---------------------------|--------------|--------------|---------------|
| 2 Bedrooms or Less        | 472          | 476          | + 0.8%        |
| 3 Bedrooms                | 1,569        | 1,429        | - 8.9%        |
| 4 Bedrooms or More        | 872          | 861          | - 1.3%        |
| <b>All Bedroom Counts</b> | <b>2,913</b> | <b>2,766</b> | <b>- 5.0%</b> |

| By Bedroom Count          | 10-2022      | 10-2023      | Change        |
|---------------------------|--------------|--------------|---------------|
| 2 Bedrooms or Less        | 247          | 273          | + 10.5%       |
| 3 Bedrooms                | 1,456        | 1,323        | - 9.1%        |
| 4 Bedrooms or More        | 852          | 847          | - 0.6%        |
| <b>All Bedroom Counts</b> | <b>2,555</b> | <b>2,443</b> | <b>- 4.4%</b> |

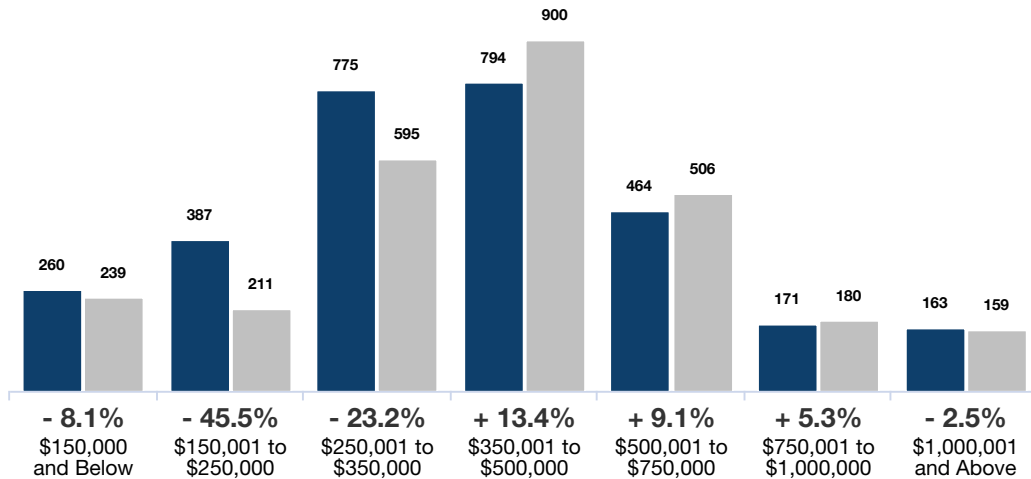
# Closed Sales



A count of the actual sales that closed. **Based on a rolling 12-month total.**

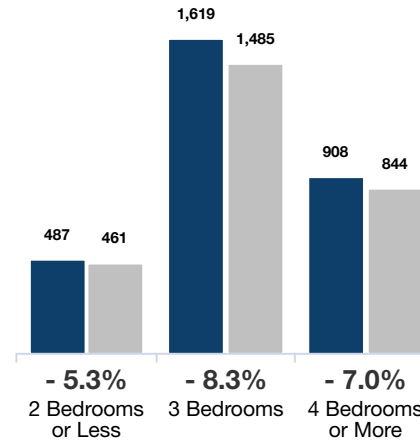
## By Price Range

■ 10-2022 ■ 10-2023



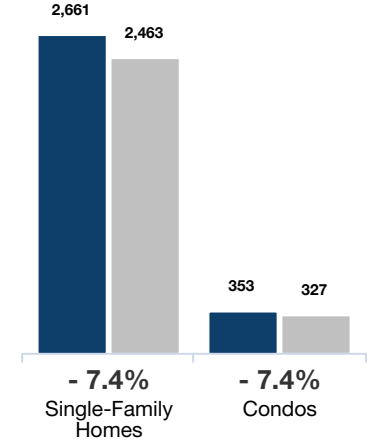
## By Bedroom Count

■ 10-2022 ■ 10-2023



## By Property Type

■ 10-2022 ■ 10-2023



### All Properties

| By Price Range           | 10-2022      | 10-2023      | Change        |
|--------------------------|--------------|--------------|---------------|
| \$150,000 and Below      | 260          | 239          | - 8.1%        |
| \$150,001 to \$250,000   | 387          | 211          | - 45.5%       |
| \$250,001 to \$350,000   | 775          | 595          | - 23.2%       |
| \$350,001 to \$500,000   | 794          | 900          | + 13.4%       |
| \$500,001 to \$750,000   | 464          | 506          | + 9.1%        |
| \$750,001 to \$1,000,000 | 171          | 180          | + 5.3%        |
| \$1,000,001 and Above    | 163          | 159          | - 2.5%        |
| <b>All Price Ranges</b>  | <b>3,014</b> | <b>2,790</b> | <b>- 7.4%</b> |

### Single-Family Homes

| By Bedroom Count          | 10-2022      | 10-2023      | Change        |
|---------------------------|--------------|--------------|---------------|
| 2 Bedrooms or Less        | 487          | 461          | - 5.3%        |
| 3 Bedrooms                | 1,619        | 1,485        | - 8.3%        |
| 4 Bedrooms or More        | 908          | 844          | - 7.0%        |
| <b>All Bedroom Counts</b> | <b>3,014</b> | <b>2,790</b> | <b>- 7.4%</b> |

### Condos

| By Price Range           | 10-2022      | 10-2023      | Change        |
|--------------------------|--------------|--------------|---------------|
| \$150,000 and Below      | 217          | 211          | - 2.8%        |
| \$150,001 to \$250,000   | 269          | 137          | - 49.1%       |
| \$250,001 to \$350,000   | 676          | 493          | - 27.1%       |
| \$350,001 to \$500,000   | 742          | 832          | + 12.1%       |
| \$500,001 to \$750,000   | 439          | 466          | + 6.2%        |
| \$750,001 to \$1,000,000 | 161          | 171          | + 6.2%        |
| \$1,000,001 and Above    | 157          | 153          | - 2.5%        |
| <b>All Price Ranges</b>  | <b>2,661</b> | <b>2,463</b> | <b>- 7.4%</b> |

| By Price Range           | 10-2022    | 10-2023    | Change        |
|--------------------------|------------|------------|---------------|
| \$150,000 and Below      | 43         | 28         | - 34.9%       |
| \$150,001 to \$250,000   | 118        | 74         | - 37.3%       |
| \$250,001 to \$350,000   | 99         | 102        | + 3.0%        |
| \$350,001 to \$500,000   | 52         | 68         | + 30.8%       |
| \$500,001 to \$750,000   | 25         | 40         | + 60.0%       |
| \$750,001 to \$1,000,000 | 10         | 9          | - 10.0%       |
| \$1,000,001 and Above    | 6          | 6          | 0.0%          |
| <b>All Price Ranges</b>  | <b>353</b> | <b>327</b> | <b>- 7.4%</b> |

| By Bedroom Count          | 10-2022      | 10-2023      | Change        |
|---------------------------|--------------|--------------|---------------|
| 2 Bedrooms or Less        | 261          | 256          | - 1.9%        |
| 3 Bedrooms                | 1,511        | 1,373        | - 9.1%        |
| 4 Bedrooms or More        | 889          | 834          | - 6.2%        |
| <b>All Bedroom Counts</b> | <b>2,661</b> | <b>2,463</b> | <b>- 7.4%</b> |

# Days On Market Until Sale

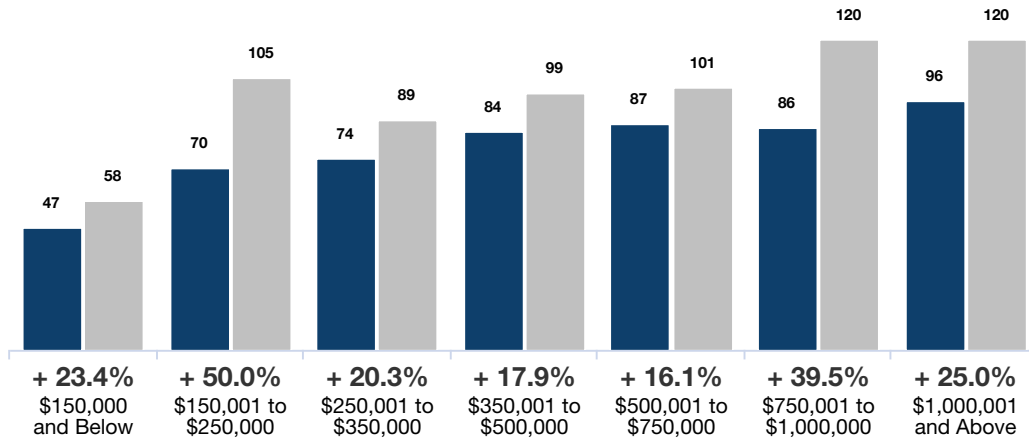


Average number of days between when a property is listed and when an offer is accepted.

Based on a rolling 12-month average.

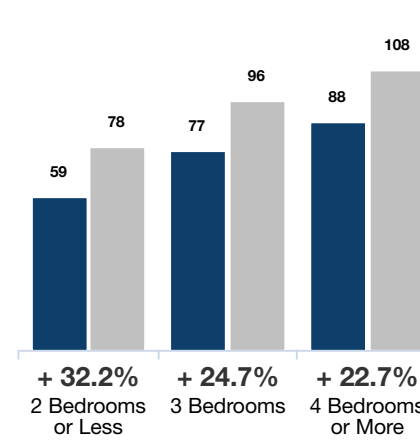
## By Price Range

■ 10-2022 ■ 10-2023



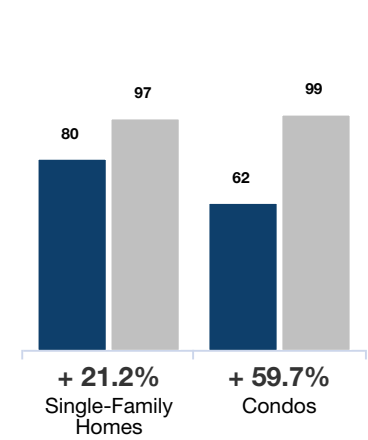
## By Bedroom Count

■ 10-2022 ■ 10-2023



## By Property Type

■ 10-2022 ■ 10-2023



### All Properties

| By Price Range           | 10-2022   | 10-2023   | Change         |
|--------------------------|-----------|-----------|----------------|
| \$150,000 and Below      | 47        | 58        | + 23.4%        |
| \$150,001 to \$250,000   | 70        | 105       | + 50.0%        |
| \$250,001 to \$350,000   | 74        | 89        | + 20.3%        |
| \$350,001 to \$500,000   | 84        | 99        | + 17.9%        |
| \$500,001 to \$750,000   | 87        | 101       | + 16.1%        |
| \$750,001 to \$1,000,000 | 86        | 120       | + 39.5%        |
| \$1,000,001 and Above    | 96        | 120       | + 25.0%        |
| <b>All Price Ranges</b>  | <b>77</b> | <b>97</b> | <b>+ 26.0%</b> |

### Single-Family Homes

|                                | 10-2022   | 10-2023   | Change         |
|--------------------------------|-----------|-----------|----------------|
|                                | 46        | 61        | + 32.6%        |
|                                | 76        | 83        | + 9.2%         |
|                                | 76        | 92        | + 21.1%        |
|                                | 84        | 99        | + 17.9%        |
|                                | 87        | 102       | + 17.2%        |
|                                | 87        | 120       | + 37.9%        |
|                                | 98        | 117       | + 19.4%        |
| <b>All Single-Family Homes</b> | <b>80</b> | <b>97</b> | <b>+ 21.2%</b> |

### Condos

|                   | 10-2022   | 10-2023   | Change         |
|-------------------|-----------|-----------|----------------|
|                   | 49        | 39        | - 20.4%        |
|                   | 58        | 145       | + 150.0%       |
|                   | 59        | 76        | + 28.8%        |
|                   | 75        | 100       | + 33.3%        |
|                   | 88        | 92        | + 4.5%         |
|                   | 72        | 121       | + 68.1%        |
|                   | 54        | 188       | + 248.1%       |
| <b>All Condos</b> | <b>62</b> | <b>99</b> | <b>+ 59.7%</b> |

### By Bedroom Count

|                           | 10-2022   | 10-2023   | Change         |
|---------------------------|-----------|-----------|----------------|
| 2 Bedrooms or Less        | 59        | 78        | + 32.2%        |
| 3 Bedrooms                | 77        | 96        | + 24.7%        |
| 4 Bedrooms or More        | 88        | 108       | + 22.7%        |
| <b>All Bedroom Counts</b> | <b>77</b> | <b>97</b> | <b>+ 26.0%</b> |

### Single-Family Homes

|                                | 10-2022   | 10-2023   | Change         |
|--------------------------------|-----------|-----------|----------------|
|                                | 58        | 73        | + 25.9%        |
|                                | 78        | 94        | + 20.5%        |
|                                | 89        | 109       | + 22.5%        |
| <b>All Single-Family Homes</b> | <b>80</b> | <b>97</b> | <b>+ 21.2%</b> |

### Condos

|                   | 10-2022   | 10-2023   | Change         |
|-------------------|-----------|-----------|----------------|
|                   | 61        | 83        | + 36.1%        |
|                   | 62        | 127       | + 104.8%       |
|                   | 77        | 96        | + 24.7%        |
| <b>All Condos</b> | <b>62</b> | <b>99</b> | <b>+ 59.7%</b> |

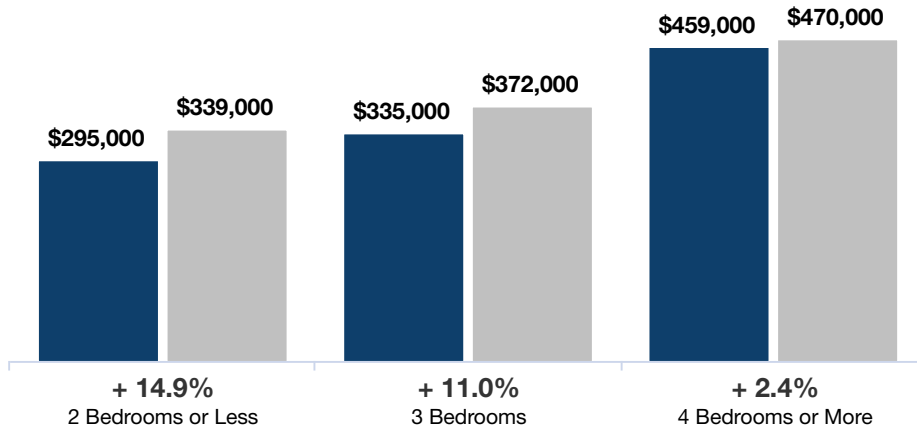
# Median Sales Price



Median price point for all closed sales, not accounting for seller concessions. **Based on a rolling 12-month median.**

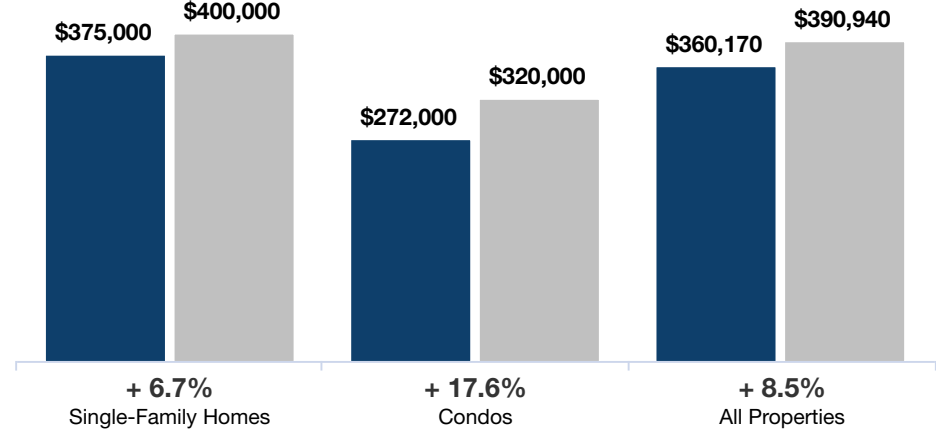
## By Bedroom Count

■ 10-2022 ■ 10-2023



## By Property Type

■ 10-2022 ■ 10-2023



### All Properties

#### By Bedroom Count

|                           | 10-2022          | 10-2023          | Change        |
|---------------------------|------------------|------------------|---------------|
| 2 Bedrooms or Less        | \$295,000        | \$339,000        | + 14.9%       |
| 3 Bedrooms                | \$335,000        | \$372,000        | + 11.0%       |
| 4 Bedrooms or More        | \$459,000        | \$470,000        | + 2.4%        |
| <b>All Bedroom Counts</b> | <b>\$360,170</b> | <b>\$390,940</b> | <b>+ 8.5%</b> |

### Single-Family Homes

|                                | 10-2022          | 10-2023          | Change        |
|--------------------------------|------------------|------------------|---------------|
|                                | \$331,000        | \$377,500        | + 14.0%       |
|                                | \$339,000        | \$374,900        | + 10.6%       |
|                                | \$463,800        | \$468,840        | + 1.1%        |
| <b>All Single-Family Homes</b> | <b>\$375,000</b> | <b>\$400,000</b> | <b>+ 6.7%</b> |

### Condos

|                   | 10-2022          | 10-2023          | Change         |
|-------------------|------------------|------------------|----------------|
|                   | \$262,500        | \$287,000        | + 9.3%         |
|                   | \$291,250        | \$329,450        | + 13.1%        |
|                   | \$248,500        | \$714,000        | + 187.3%       |
| <b>All Condos</b> | <b>\$272,000</b> | <b>\$320,000</b> | <b>+ 17.6%</b> |

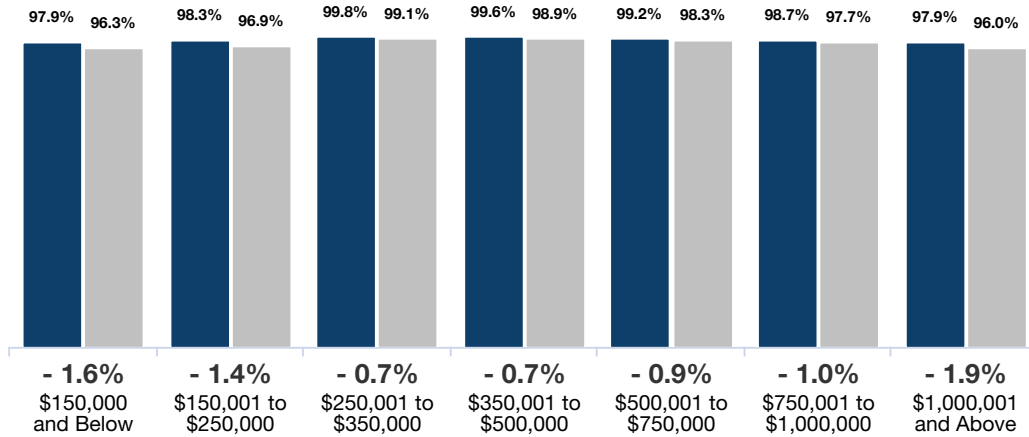
# Percent of List Price Received



Percentage found when dividing a property's sales price by its last list price, then taking the average for all properties sold, not accounting for seller concessions. **Based on a rolling 12-month average.**

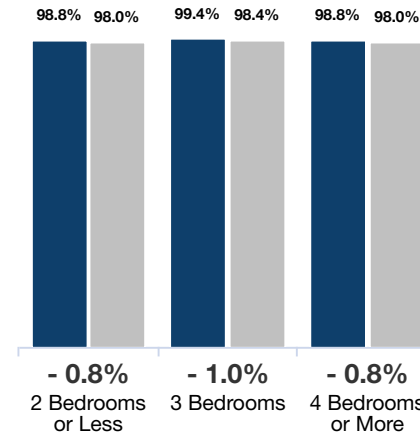
## By Price Range

■ 10-2022 ■ 10-2023



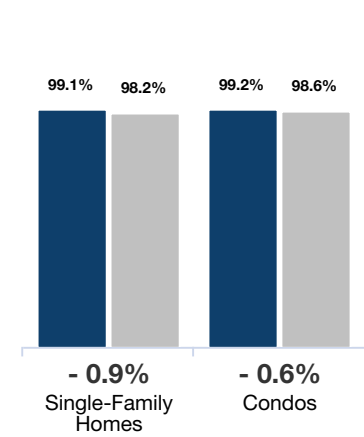
## By Bedroom Count

■ 10-2022 ■ 10-2023



## By Property Type

■ 10-2022 ■ 10-2023



|                           | All Properties |              |              | Single-Family Homes |              |              | Condos       |              |              |
|---------------------------|----------------|--------------|--------------|---------------------|--------------|--------------|--------------|--------------|--------------|
| By Price Range            | 10-2022        | 10-2023      | Change       | 10-2022             | 10-2023      | Change       | 10-2022      | 10-2023      | Change       |
| \$150,000 and Below       | 97.9%          | 96.3%        | -1.6%        | 97.7%               | 96.0%        | -1.7%        | 98.6%        | 98.3%        | -0.3%        |
| \$150,001 to \$250,000    | 98.3%          | 96.9%        | -1.4%        | 98.0%               | 95.9%        | -2.1%        | 99.1%        | 98.8%        | -0.3%        |
| \$250,001 to \$350,000    | 99.8%          | 99.1%        | -0.7%        | 99.8%               | 99.2%        | -0.6%        | 99.7%        | 98.4%        | -1.3%        |
| \$350,001 to \$500,000    | 99.6%          | 98.9%        | -0.7%        | 99.7%               | 98.9%        | -0.8%        | 98.4%        | 98.8%        | +0.4%        |
| \$500,001 to \$750,000    | 99.2%          | 98.3%        | -0.9%        | 99.2%               | 98.2%        | -1.0%        | 100.2%       | 98.8%        | -1.4%        |
| \$750,001 to \$1,000,000  | 98.7%          | 97.7%        | -1.0%        | 98.5%               | 97.7%        | -0.8%        | 102.4%       | 97.1%        | -5.2%        |
| \$1,000,001 and Above     | 97.9%          | 96.0%        | -1.9%        | 97.9%               | 95.9%        | -2.0%        | 98.1%        | 97.2%        | -0.9%        |
| <b>All Price Ranges</b>   | <b>99.1%</b>   | <b>98.2%</b> | <b>-0.9%</b> | <b>99.1%</b>        | <b>98.2%</b> | <b>-0.9%</b> | <b>99.2%</b> | <b>98.6%</b> | <b>-0.6%</b> |
| By Bedroom Count          | 10-2022        | 10-2023      | Change       | 10-2022             | 10-2023      | Change       | 10-2022      | 10-2023      | Change       |
| 2 Bedrooms or Less        | 98.8%          | 98.0%        | -0.8%        | 98.7%               | 97.6%        | -1.1%        | 98.9%        | 98.5%        | -0.4%        |
| 3 Bedrooms                | 99.4%          | 98.4%        | -1.0%        | 99.4%               | 98.4%        | -1.0%        | 99.6%        | 98.7%        | -0.9%        |
| 4 Bedrooms or More        | 98.8%          | 98.0%        | -0.8%        | 98.8%               | 98.0%        | -0.8%        | 100.7%       | 99.3%        | -1.4%        |
| <b>All Bedroom Counts</b> | <b>99.1%</b>   | <b>98.2%</b> | <b>-0.9%</b> | <b>99.1%</b>        | <b>98.2%</b> | <b>-0.9%</b> | <b>99.2%</b> | <b>98.6%</b> | <b>-0.6%</b> |

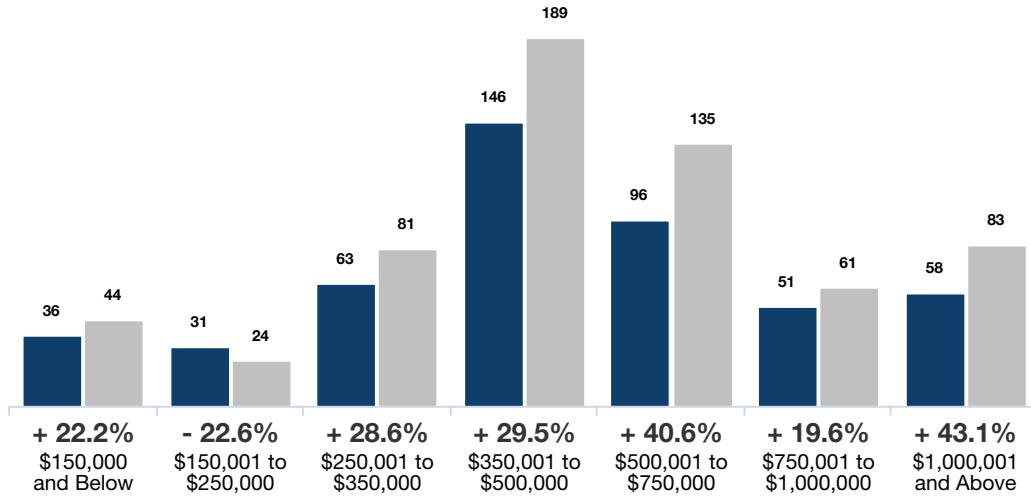
# Inventory of Homes for Sale



The number of properties available for sale in active status at the end of the most recent month. **Based on one month of activity.**

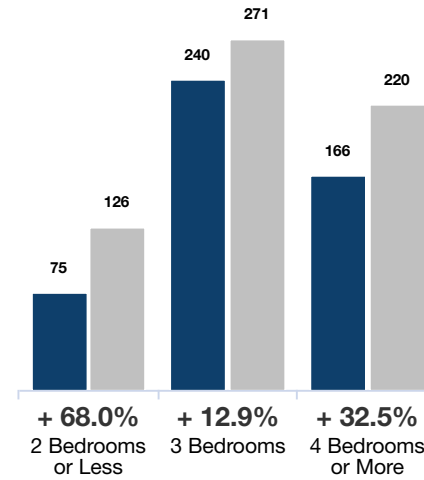
## By Price Range

■ 10-2022 ■ 10-2023



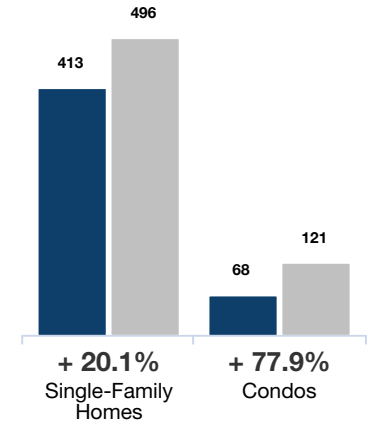
## By Bedroom Count

■ 10-2022 ■ 10-2023



## By Property Type

■ 10-2022 ■ 10-2023



### All Properties

| By Price Range           | 10-2022    | 10-2023    | Change         |
|--------------------------|------------|------------|----------------|
| \$150,000 and Below      | 36         | 44         | + 22.2%        |
| \$150,001 to \$250,000   | 31         | 24         | - 22.6%        |
| \$250,001 to \$350,000   | 63         | 81         | + 28.6%        |
| \$350,001 to \$500,000   | 146        | 189        | + 29.5%        |
| \$500,001 to \$750,000   | 96         | 135        | + 40.6%        |
| \$750,001 to \$1,000,000 | 51         | 61         | + 19.6%        |
| \$1,000,001 and Above    | 58         | 83         | + 43.1%        |
| <b>All Price Ranges</b>  | <b>481</b> | <b>617</b> | <b>+ 28.3%</b> |

### Single-Family Homes

| By Bedroom Count          | 10-2022    | 10-2023    | Change         |
|---------------------------|------------|------------|----------------|
| 2 Bedrooms or Less        | 31         | 36         | + 16.1%        |
| 3 Bedrooms                | 22         | 11         | - 50.0%        |
| 4 Bedrooms or More        | 9          | 13         | + 44.4%        |
| 2 Bedrooms or Less        | 45         | 38         | - 15.6%        |
| 3 Bedrooms                | 127        | 152        | + 19.7%        |
| 4 Bedrooms or More        | 87         | 119        | + 36.8%        |
| 2 Bedrooms or Less        | 48         | 61         | + 27.1%        |
| 3 Bedrooms                | 53         | 79         | + 49.1%        |
| <b>All Bedroom Counts</b> | <b>413</b> | <b>496</b> | <b>+ 20.1%</b> |

### Condos

| By Price Range           | 10-2022   | 10-2023    | Change         |
|--------------------------|-----------|------------|----------------|
| \$150,000 and Below      | 5         | 8          | + 60.0%        |
| \$150,001 to \$250,000   | 9         | 13         | + 44.4%        |
| \$250,001 to \$350,000   | 18        | 43         | + 138.9%       |
| \$350,001 to \$500,000   | 19        | 37         | + 94.7%        |
| \$500,001 to \$750,000   | 9         | 16         | + 77.8%        |
| \$750,001 to \$1,000,000 | 3         | 0          | - 100.0%       |
| \$1,000,001 and Above    | 5         | 4          | - 20.0%        |
| <b>All Price Ranges</b>  | <b>68</b> | <b>121</b> | <b>+ 77.9%</b> |

| By Bedroom Count          | 10-2022    | 10-2023    | Change         |
|---------------------------|------------|------------|----------------|
| 2 Bedrooms or Less        | 75         | 126        | + 68.0%        |
| 3 Bedrooms                | 240        | 271        | + 12.9%        |
| 4 Bedrooms or More        | 166        | 220        | + 32.5%        |
| <b>All Bedroom Counts</b> | <b>481</b> | <b>617</b> | <b>+ 28.3%</b> |

| By Price Range           | 10-2022   | 10-2023    | Change         |
|--------------------------|-----------|------------|----------------|
| \$150,000 and Below      | 31        | 45         | + 45.2%        |
| \$150,001 to \$250,000   | 220       | 239        | + 8.6%         |
| \$250,001 to \$350,000   | 162       | 212        | + 30.9%        |
| \$350,001 to \$500,000   | 44        | 81         | + 84.1%        |
| \$500,001 to \$750,000   | 20        | 32         | + 60.0%        |
| \$750,001 to \$1,000,000 | 4         | 8          | + 100.0%       |
| \$1,000,001 and Above    | 4         | 8          | + 100.0%       |
| <b>All Price Ranges</b>  | <b>68</b> | <b>121</b> | <b>+ 77.9%</b> |

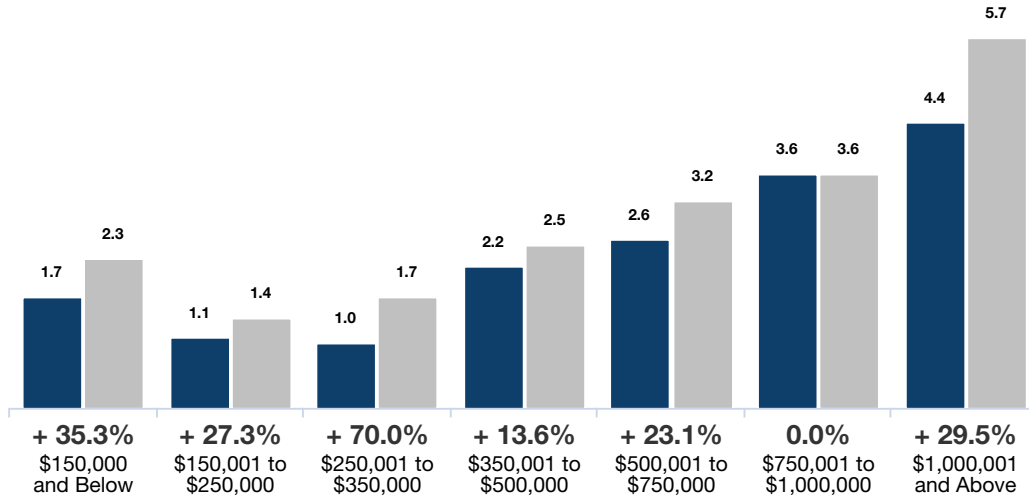
# Months Supply of Inventory

The inventory of homes for sale at the end of the most recent month, divided by the average monthly pending sales from the last 12 months.

Based on one month of activity.

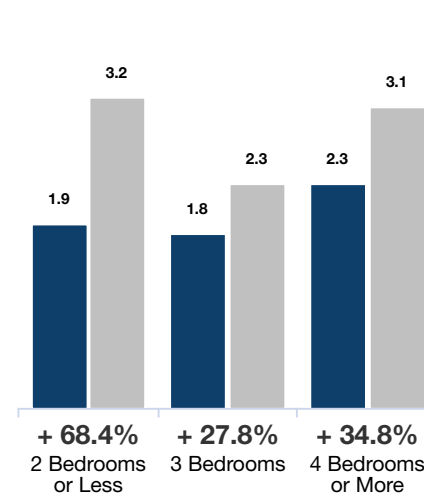
## By Price Range

■ 10-2022 ■ 10-2023



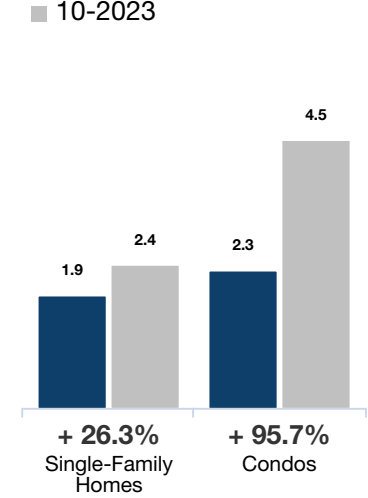
## By Bedroom Count

■ 10-2022 ■ 10-2023



## By Property Type

■ 10-2022 ■ 10-2023



### All Properties

| By Price Range           | 10-2022    | 10-2023    | Change         |
|--------------------------|------------|------------|----------------|
| \$150,000 and Below      | 1.7        | 2.3        | + 35.3%        |
| \$150,001 to \$250,000   | 1.1        | 1.4        | + 27.3%        |
| \$250,001 to \$350,000   | 1.0        | 1.7        | + 70.0%        |
| \$350,001 to \$500,000   | 2.2        | 2.5        | + 13.6%        |
| \$500,001 to \$750,000   | 2.6        | 3.2        | + 23.1%        |
| \$750,001 to \$1,000,000 | 3.6        | 3.6        | 0.0%           |
| \$1,000,001 and Above    | 4.4        | 5.7        | + 29.5%        |
| <b>All Price Ranges</b>  | <b>2.0</b> | <b>2.7</b> | <b>+ 35.0%</b> |

### Single-Family Homes

| By Price Range           | 10-2022    | 10-2023    | Change         |
|--------------------------|------------|------------|----------------|
| \$150,000 and Below      | 1.7        | 2.2        | + 29.4%        |
| \$150,001 to \$250,000   | 1.1        | 1.0        | - 9.1%         |
| \$250,001 to \$350,000   | 0.8        | 1.0        | + 25.0%        |
| \$350,001 to \$500,000   | 2.1        | 2.2        | + 4.8%         |
| \$500,001 to \$750,000   | 2.5        | 3.1        | + 24.0%        |
| \$750,001 to \$1,000,000 | 3.5        | 3.9        | + 11.4%        |
| \$1,000,001 and Above    | 4.1        | 5.6        | + 36.6%        |
| <b>All Price Ranges</b>  | <b>1.9</b> | <b>2.4</b> | <b>+ 26.3%</b> |

### Condos

| By Price Range           | 10-2022    | 10-2023    | Change         |
|--------------------------|------------|------------|----------------|
| \$150,000 and Below      | 1.5        | 3.0        | + 100.0%       |
| \$150,001 to \$250,000   | 0.9        | 2.4        | + 166.7%       |
| \$250,001 to \$350,000   | 2.1        | 5.1        | + 142.9%       |
| \$350,001 to \$500,000   | 4.0        | 6.5        | + 62.5%        |
| \$500,001 to \$750,000   | 3.0        | 4.8        | + 60.0%        |
| \$750,001 to \$1,000,000 | 2.1        | --         | --             |
| \$1,000,001 and Above    | 3.3        | 3.4        | + 3.0%         |
| <b>All Price Ranges</b>  | <b>2.3</b> | <b>4.5</b> | <b>+ 95.7%</b> |

### By Bedroom Count

| By Bedroom Count          | 10-2022    | 10-2023    | Change         |
|---------------------------|------------|------------|----------------|
| 2 Bedrooms or Less        | 1.9        | 3.2        | + 68.4%        |
| 3 Bedrooms                | 1.8        | 2.3        | + 27.8%        |
| 4 Bedrooms or More        | 2.3        | 3.1        | + 34.8%        |
| <b>All Bedroom Counts</b> | <b>2.0</b> | <b>2.7</b> | <b>+ 35.0%</b> |

### Single-Family Homes

| By Bedroom Count          | 10-2022    | 10-2023    | Change         |
|---------------------------|------------|------------|----------------|
| 2 Bedrooms or Less        | 1.5        | 2.0        | + 33.3%        |
| 3 Bedrooms                | 1.8        | 2.2        | + 22.2%        |
| 4 Bedrooms or More        | 2.3        | 3.0        | + 30.4%        |
| <b>All Bedroom Counts</b> | <b>1.9</b> | <b>2.4</b> | <b>+ 26.3%</b> |

### Condos

| By Bedroom Count          | 10-2022    | 10-2023    | Change         |
|---------------------------|------------|------------|----------------|
| 2 Bedrooms or Less        | 2.3        | 4.8        | + 108.7%       |
| 3 Bedrooms                | 2.1        | 3.6        | + 71.4%        |
| 4 Bedrooms or More        | 2.0        | 5.1        | + 155.0%       |
| <b>All Bedroom Counts</b> | <b>2.3</b> | <b>4.5</b> | <b>+ 95.7%</b> |